

South West Nature Map

The South West Nature Map shows the best areas to maintain and expand (through restoration and/or re-creation) terrestrial wildlife habitats at a landscape scale. It is important to stress that land outside the Nature Map areas also contain wildlife sites and species that are important in their own right.

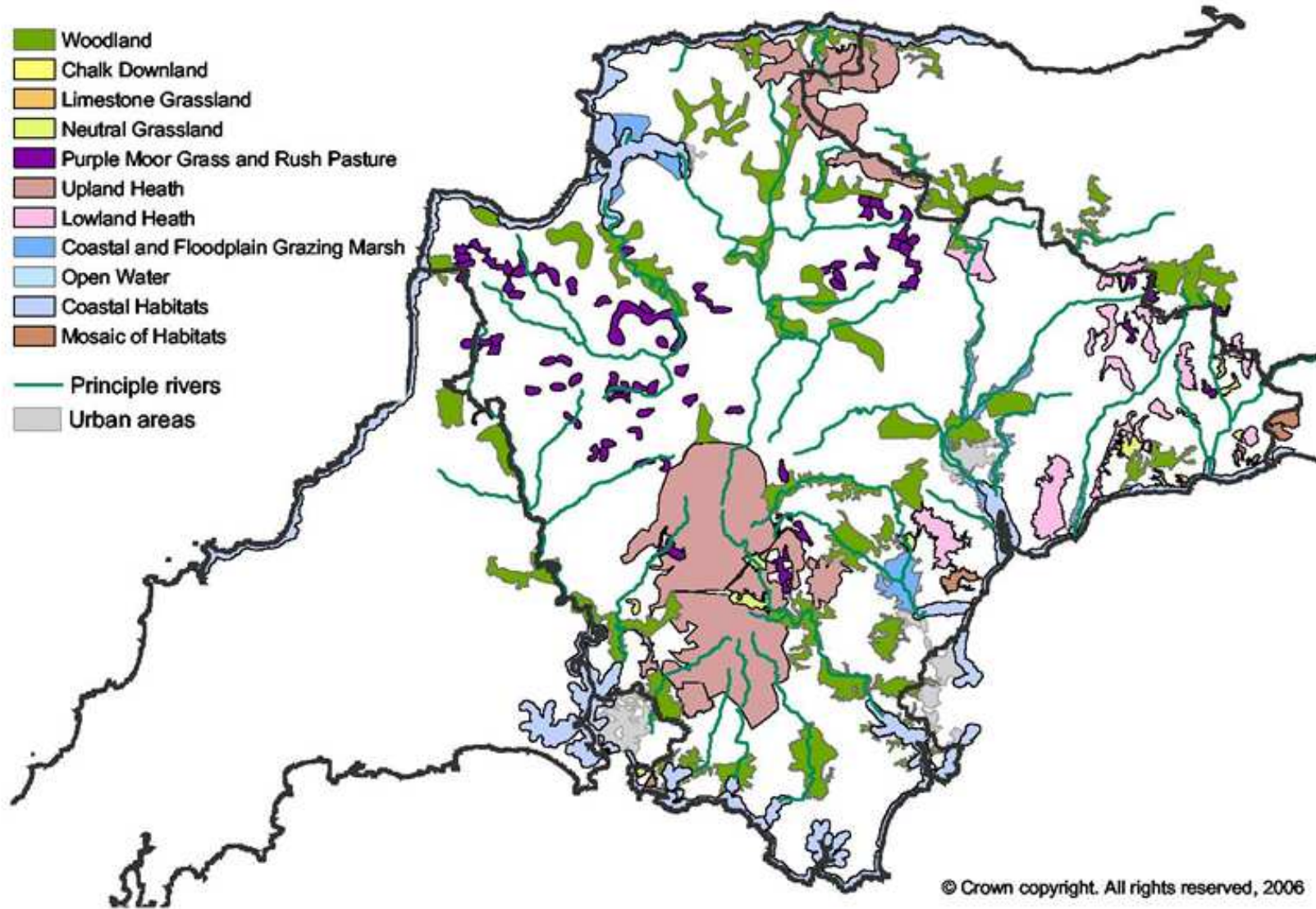
The Nature Map was produced by the South West Regional Biodiversity Partnership. It selects landscape scale blocks of land, known as Strategic Nature Areas (SNAs), to improve habitat networks and to sustain wildlife within them. SNAs will contain a mosaic of habitats, building on existing core areas and co-existing with other land uses, such as agriculture and recreation. The principal rivers are also included on the Nature Map as important linear features for biodiversity.

The intention is that the Nature Map should be used by the region's decision-makers, organisations and businesses to:

- Identify where most of the major biodiversity concentrations are found and where targets to maintain, restore and re-create wildlife might best be met
- Formulate sustainable choices for development, e.g. through Local Development Frameworks and the Regional Spatial Strategy
- Assist in targeting the new Environmental Stewardship Scheme
- Develop partnerships and projects for biodiversity in the region
- Provide a focus for projects that will help biodiversity to adapt to climate change.

Within the Dartmoor National Park, the Nature Map shows the following habitats:

1. Upland Heath
2. Woodland
3. Principal Rivers
4. Purple Moor Grass and Rush Pasture
5. Neutral Grassland.



South West Nature Map: Devon