



Dartmoor National Park

State of the Park Report 2008



December 2008



Dartmoor National Park

State of the Park Report 2008

© 2008 Dartmoor National Park Authority

About this document

This report describes the condition or 'state' of the Dartmoor National Park in 2008.

The report is structured around the ambitions of the recently adopted *Dartmoor National Park Management Plan 2007-2012*. These ambitions are designed to reflect the special qualities of the National Park. The evidence is based on time series data where available in order to describe change or trends; time series data is not always available, however. This evidence will act as a baseline for monitoring the progress of the National Park Management Plan.

The Management Plan and the State of the Park Report are available on the Dartmoor National Park Authority's web site www.dartmoor-npa.gov.uk




Key


Description of indicator

The period over which data is available and frequency with which data is collected e.g. monthly, annually, or data which is baseline or not collected at regular intervals

The latest data available

Symbols illustrate in Dartmoor National Park Authority's opinion the condition the indicator is considered to be in

-  Good condition
-  Acceptable condition
-  Poor condition

Headline Indicators	Monitoring Period	Latest Data	Condition
Landscape (L)			
Total area of moorland as defined by the DNPA Section 3 Conservation map of moor and heath	2008 (baseline)	46,985 ha	



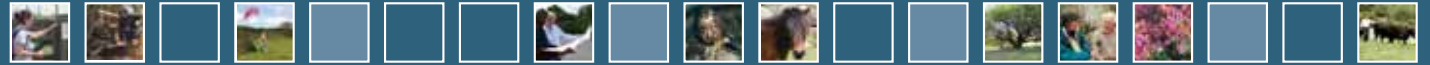
Dartmoor National Park

State of the Park Report 2008

This report has been prepared with help from partners including:



December 2008



© Alison Geen

Contents

STATE OF THE PARK SUMMARY	4	■
DARTMOOR NATIONAL PARK MAP	7	■
INTRODUCTION		
Dartmoor National Park Management Plan 2007-2012	9	■
State of the Park Reporting	9	■
Monitoring of the Delivery of the Plan	9	■
Monitoring across National Parks	10	■
CROSS-CUTTING THEMES		
Climate Change (and Air Quality)	12	■
Upland Farming	16	■
Traffic and Transport	18	■
Social Inclusion	20	■
Evidence and Research	22	■
SENSE OF PLACE		
Landscape (L)	26	■
Tranquillity and Remoteness (TR)	28	■
Habitats and Wildlife (HW)	30	■
Cultural Distinctiveness (CD)	32	■
Archaeology Heritage (AH)	34	■
Historic Built Environment (HB)	35	■
Water Environment (WE)	37	■



ACCESS FOR ALL

Interpretation, Information and Communication (IC)	40	■
Learning and Education (LE)	42	■
Recreation and Enjoyment (RE)	44	■
Enabling Access (A)	46	■
Tourism (T)	47	■

COMMUNITIES AND BUSINESS

Land Management (LM)	50	■
Community Well-being (CW)	52	■
Economic Activity (EA)	54	■
New Development (ND)	56	■
Energy (E)	58	■
Military Training (MT)	60	■

LIST OF ABBREVIATIONS	64	■
---------------------------------	----	---

